



**quup**  
HEATING SYSTEMS

**quup**

**quup**  
HEATING SYSTEMS





# NEW



12

**VIGOR**  
ALUMINIUM DESIGN  
RADIATOR



28

**YETI**  
ALUMINIUM PORTABLE  
RADIATOR



42

**RIFLE**  
ALUMINIUM ELECTRICAL  
HEATER



54

**PIXEL**  
ALUMINIUM DECORATIVE  
RADIATOR



66

**ODZY**  
ALUMINIUM TUBE  
RADIATOR



78

**SKY**  
ALUMINIUM SLIM  
RADIATOR



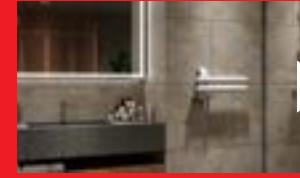
90

**SPARK**  
ALUMINIUM DECORATIVE  
TOWEL WARMER



20

**VIGOR**  
ALUMINIUM ELECTRICAL  
HEATER



36

**RIFLE**  
ALUMINIUM DESIGN  
RADIATOR



48

**GUARDIAN**  
ALUMINIUM DESIGNED  
HEATER



60

**LUCID**  
ALUMINIUM DECORATIVE  
RADIATOR



72

**FRAME**  
ALUMINIUM UNIVERSAL  
RADIATOR



84

**VECTOR**  
ALUMINIUM DECORATIVE  
TOWEL WARMER

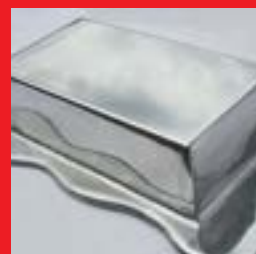
quup

# A B O U T ABOUT

Produced by a world leading manufacturer of the highest quality profiles and finishes in the aluminium industry. After years of R&D using the latest technologies, an unparalleled colorization process and spectrum has been achieved expressly for this application.

Strikingly beautiful, safe and highly efficient, these systems are made from aluminium, more than doubling BTU output versus traditional systems.

A revolutionary re-design of water and electrically based heating systems using 21st Century technologies, a new system has been created.



# MATERIAL

Many materials are considered when designing a product. When the transfer of heat is the goal; the best material for thermal conductivity is aluminium. QUUP, only pure extruded aluminium.



# MANUFACTURING

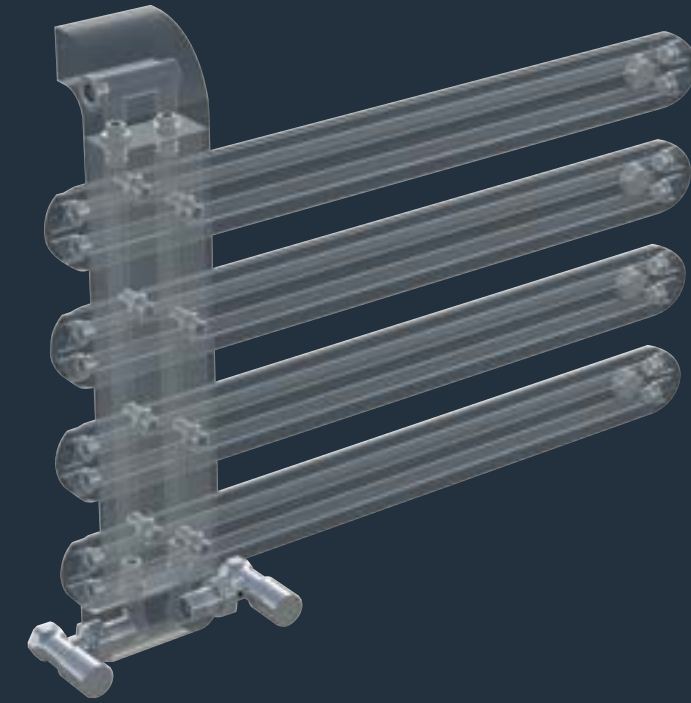
The aim was to create the Radiator of the Future, to complement new design expressions, and run economically on low temperature hydronic loops, or low voltage. Using only the best in the world of aluminium production, experience, and technology, the result is: QUUP Heating Solutions.

# C O N C E P T

# CONCEPT

QUUP's Engineers have distilled decades of experience creating complex designs into the most technologically advanced line ever presented.

---

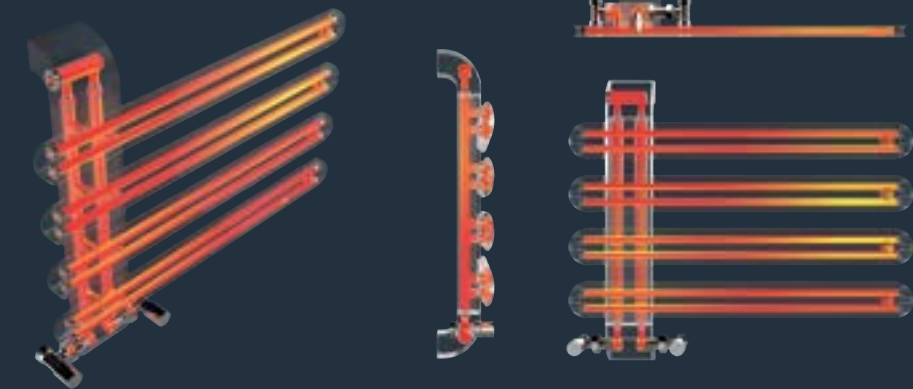


# D E S I G N

# DESIGN

QUUP has amplified the adage "Form Follows Function" into Industrial Design and has transformed the mundane into the magnificent. QUUP is the synthesis of Art, Science and Technology.

---





**quup**

# VIGOR

## ALUMINIUM DESIGN RADIATOR

Vigor aluminium design radiator has been developed for you to enjoy your living spaces more with its innovative design.

[www.quupheating.com](http://www.quupheating.com)





quup

COLORS VIGOR COLORS

## POWDER COATED



Pearl White



Matte Black



Anthracite



Granite



Sky Blue



Rose

## ANODIZED



Inox



Space Grey



Titanium Blue



Gold



Piano Black

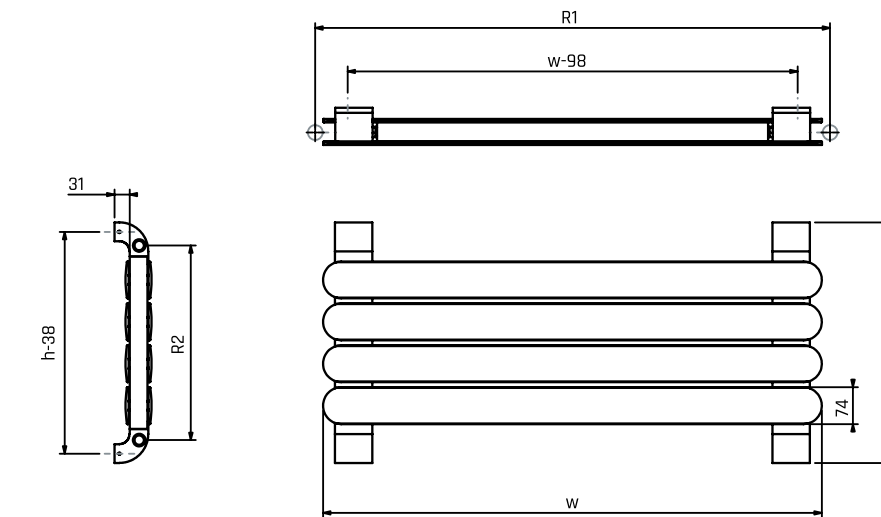




# TECHNICAL

VIGOR TECHNICAL DATA

PIPE QTY	WIDTH (w)	R1	R2	HEIGHT (h)	HEATING OUTPUT $\Delta T50$ (Hydronic)	WEIGHT
3	900 mm	400 mm	932 mm	306 mm	122 W	11.5 kg
4	900 mm	480 mm	932 mm	390 mm	196 W	14.6 kg
2	1200 mm	315 mm	1232 mm	222 mm	64 W	10.2 kg
3	1200 mm	400 mm	1232 mm	306 mm	122 W	14.2 kg
4	1200 mm	480 mm	1232 mm	390 mm	196 W	18.1 kg
2	1400 mm	315 mm	1432 mm	222 mm	64 W	11.4 kg
3	1400 mm	400 mm	1432 mm	306 mm	122 W	15.9 kg
4	1400 mm	480 mm	1432 mm	390 mm	196 W	20.5 kg
2	1600 mm	315 mm	1632 mm	222 mm	64 W	12.6 kg
3	1600 mm	400 mm	1632 mm	306 mm	122 W	17.7 kg
4	1600 mm	480 mm	1632 mm	390 mm	196 W	22.9 kg



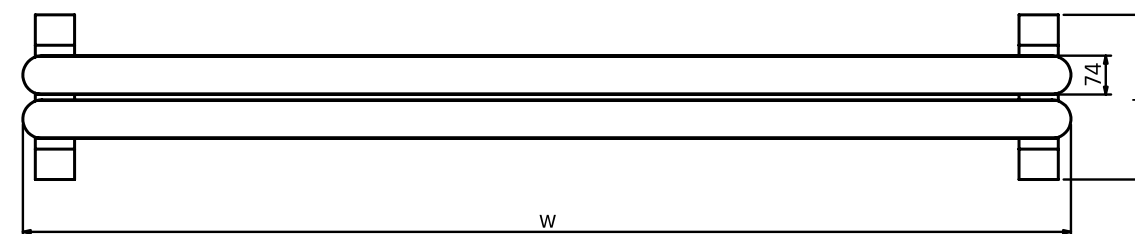
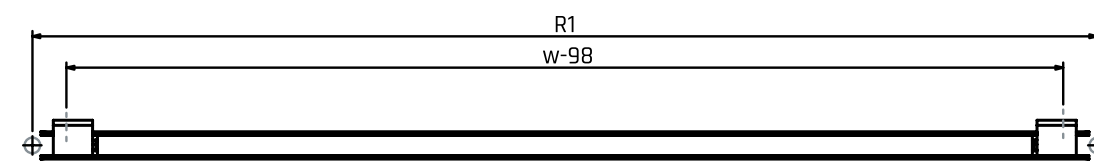
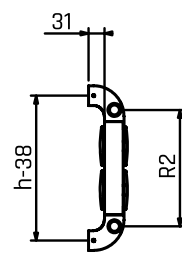


**QUUP**

# TECHNICAL

VIGOR BASEBOARD TECHNICAL DATA

PIPE QTY	WIDTH (w)	HEIGHT (h)	R1	R2	HEATING OUTPUT ΔT50 (Hydronic)	WEIGHT
2	900 mm	315 mm	932 mm	222 mm	184 W	8.4 kg
2	1200 mm	315 mm	1232 mm	222 mm	245 W	10.2 kg
2	1400 mm	315 mm	1432 mm	222 mm	286 W	11.4 kg
2	1600 mm	315 mm	1632 mm	222 mm	326 W	12.6 kg
2	1800 mm	315 mm	1832 mm	222 mm	367 W	13.8 kg
2	2000 mm	315 mm	2032 mm	222 mm	408 W	15.0 kg
2	2500 mm	315 mm	2532 mm	222 mm	510 W	17.9 kg
2	2700 mm	315 mm	2732 mm	222 mm	551 W	19.1 kg
2	3000 mm	315 mm	3032 mm	222 mm	612 W	20.9 kg



**QUUP**

# VIGOR-

## ALUMINIUM ELECTRICAL HEATER

Vigor aluminium electrical heater has been developed for you to enjoy your living spaces more with its innovative design.

[www.quupheating.com](http://www.quupheating.com)



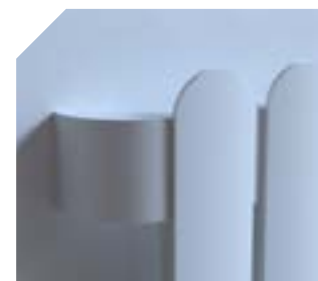


**quup**

**COLORS**  
VIGOR-E COLORS

POWDER COATED

# POWDER COATED



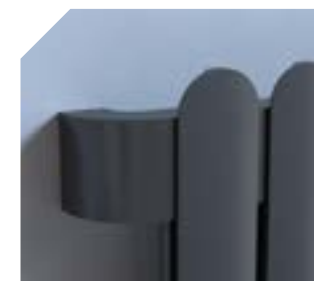
Pearl White



Matte Black



Anthracite



Granite



Sky Blue



Rose

ANODIZED

# ANODIZED



Inox



Space Grey



Titanium Blue



Gold



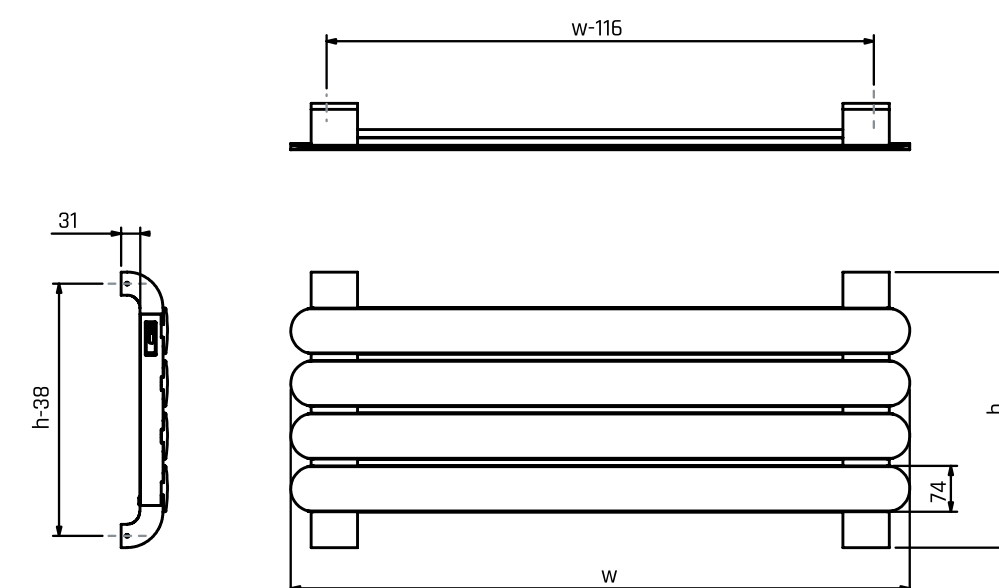
Piano Black



# TECHNICAL

VIGOR-E TECHNICAL DATA

PIPE QTY	WIDTH (w)	HEIGHT (h)	POWER (Electric Heating Element)	WEIGHT
3	900 mm	360 mm	450 W	8.6 kg
4	900 mm	445 mm	600 W	10.6 kg
2	1200 mm	275 mm	400 W	7.7 kg
3	1200 mm	360 mm	600 W	10.4 kg
4	1200 mm	445 mm	800 W	13.1 kg
2	1400 mm	275 mm	400 W	8.5 kg
3	1400 mm	360 mm	600 W	11.6 kg
4	1400 mm	445 mm	800 W	14.7 kg
2	1600 mm	275 mm	600 W	9.3 kg
3	1600 mm	360 mm	900 W	12.8 kg
4	1600 mm	445 mm	1200 W	16.3 kg

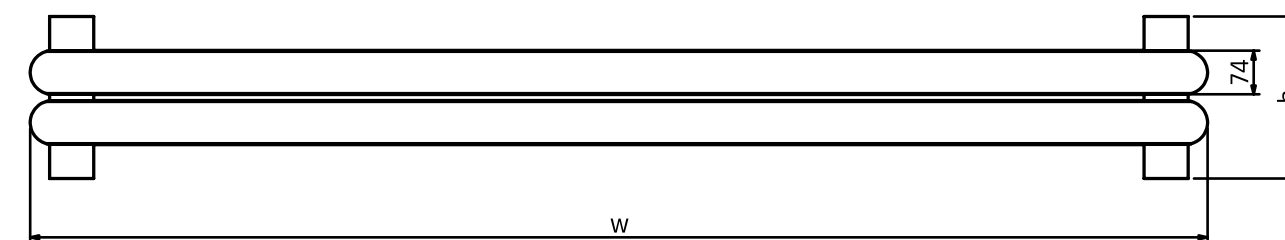
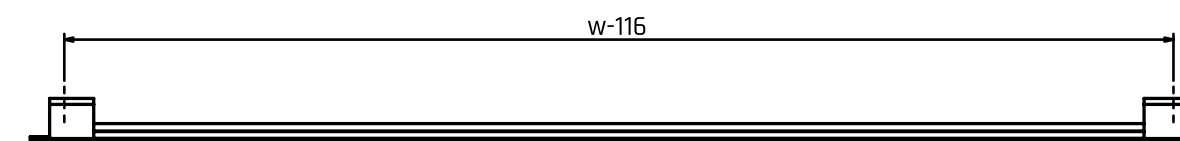
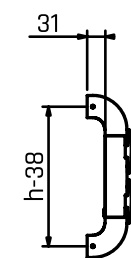




**QUUP**

**TECHNICAL**  
VIGOR ELECTRIC BASEBOARD TECHNICAL DATA

PIPE QTY	WIDTH (w)	HEIGHT (h)	POWER (Electric Heating Element)	WEIGHT
2	900 mm	275 mm	300 W	6.5 kg
2	1200 mm	275 mm	400 W	7.7 kg
2	1400 mm	275 mm	400 W	8.5 kg
2	1600 mm	275 mm	600 W	9.3 kg
2	1800 mm	275 mm	600 W	10.2 kg
2	2000 mm	275 mm	900 W	11.0 kg
2	2500 mm	275 mm	2000 W	13.0 kg
2	2700 mm	275 mm	2000 W	13.8 kg
2	3000 mm	275 mm	3000 W	15.0 kg



**QUUP**

# YETI

## ALUMINIUM PORTABLE RADIATOR

---

Yeti aluminum portable radiator was developed for those who prefer freedom in their living spaces.

[www.quupheating.com](http://www.quupheating.com)

28

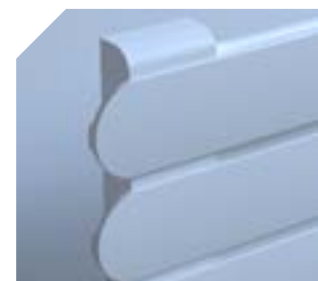




**quup**

COLORS YETI COLORS

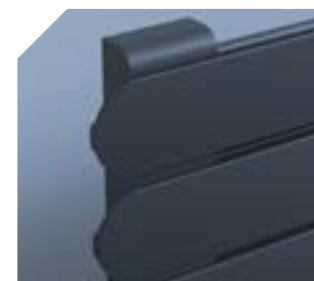
## POWDER COATED



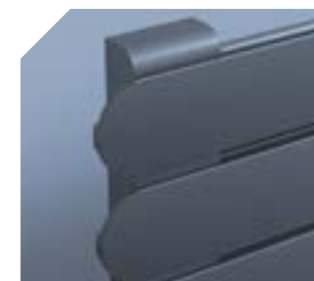
Pearl White



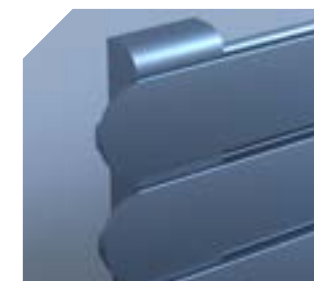
Matte Black



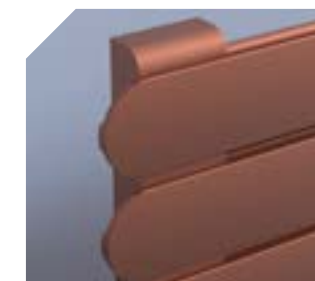
Anthracite



Granite

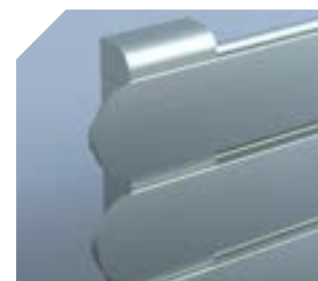


Sky Blue

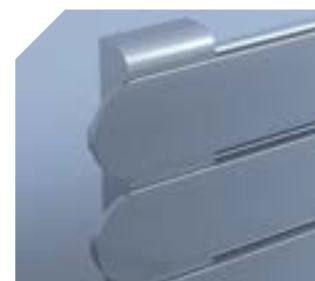


Rose

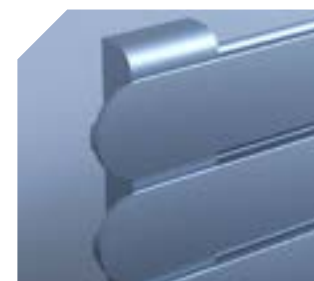
## ANODIZED



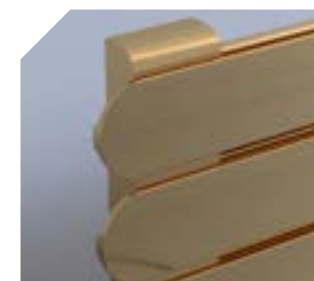
Inox



Space Grey



Titanium Blue

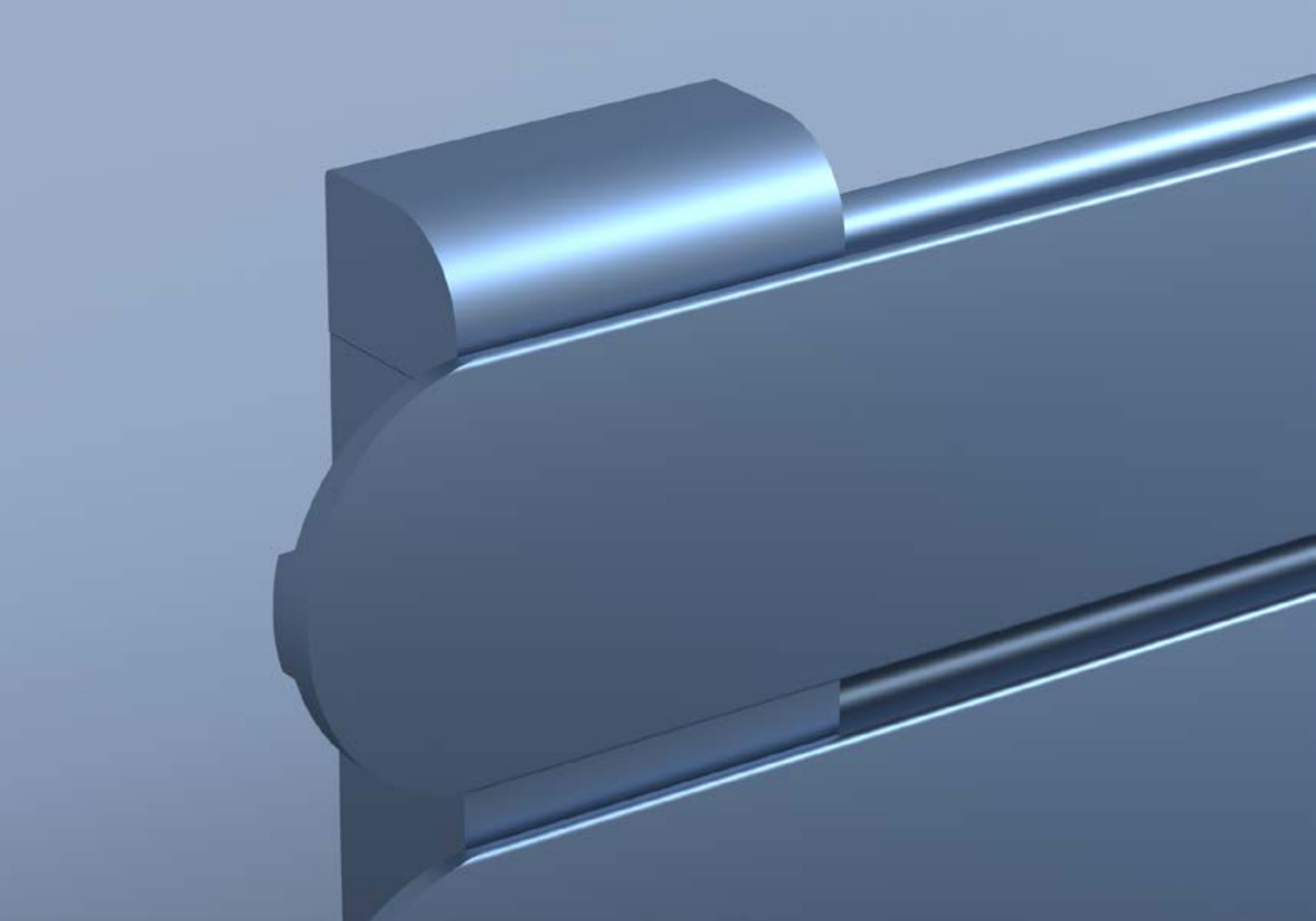


Gold



Piano Black

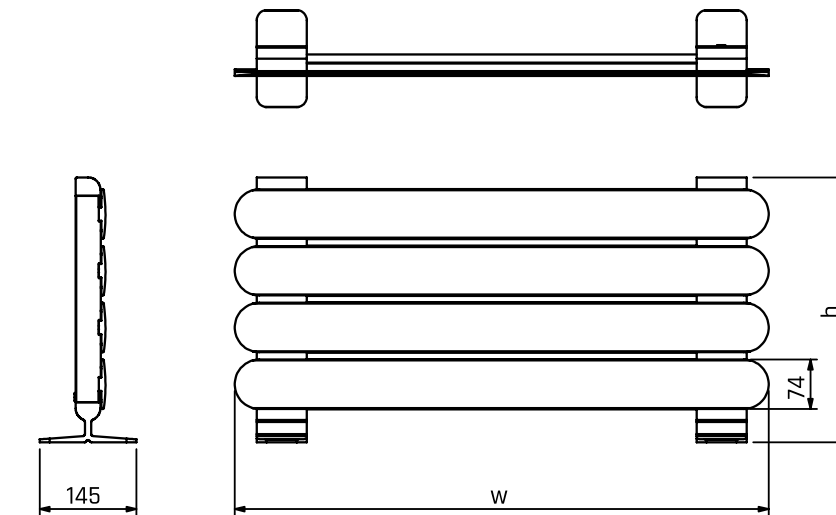




# TECHNICAL

YETI TECHNICAL DATA

PIPE QTY	WIDTH (w)	HEIGHT (h)	POWER (Electric Heating Element)	WEIGHT
3	900 mm	312 mm	450 W	7.4 kg
4	900 mm	397 mm	600 W	9.5 kg
2	1200 mm	227 mm	400 W	6.5 kg
3	1200 mm	312 mm	600 W	9.2 kg
4	1200 mm	397 mm	800 W	11.9 kg
2	1400 mm	227 mm	400 W	7.4 kg
3	1400 mm	312 mm	600 W	10.4 kg
4	1400 mm	397 mm	800 W	13.5 kg
2	1600 mm	227 mm	600 W	8.2 kg
3	1600 mm	312 mm	900 W	11.7 kg
4	1600 mm <td 397 mm	1200 W	15.1 kg	



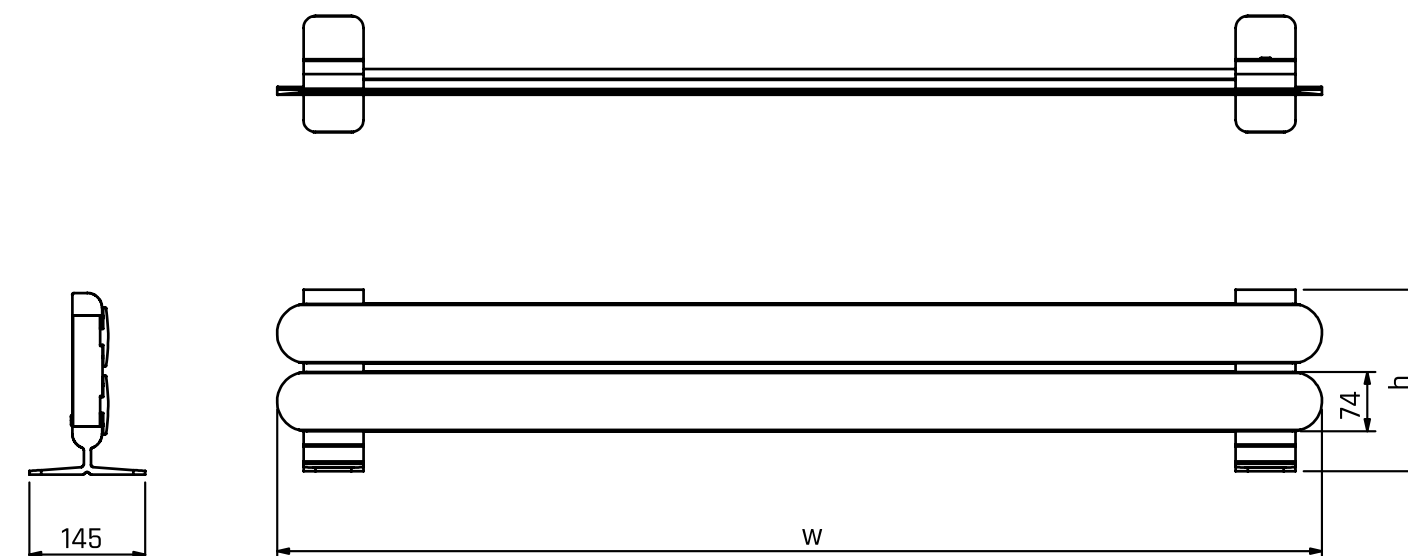


**QUUP**

# TECHNICAL

YETI BASEBOARD TECHNICAL DATA

PIPE QTY	WIDTH (w)	HEIGHT (h)	POWER (Electric Heating Element)	WEIGHT
2	900 mm	227 mm	300 W	5.3 kg
2	1200 mm	227 mm	400 W	6.5 kg
2	1400 mm	227 mm	400 W	7.4 kg
2	1600 mm	227 mm	600 W	8.2 kg
2	1800 mm	227 mm	600 W	9.0 kg
2	2000 mm	227 mm	900 W	9.8 kg
2	2500 mm	227 mm	2000 W	11.8 kg
2	2700 mm	227 mm	2000 W	12.6 kg
2	3000 mm	227 mm	3000 W	13.9 kg



**QUUP**

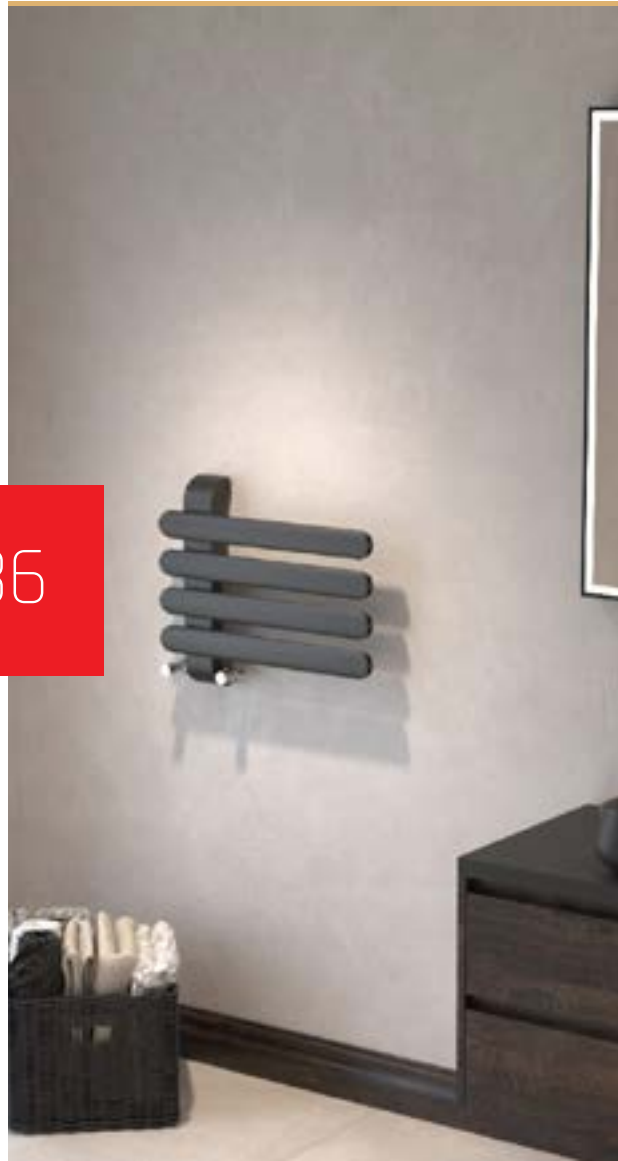
# RIFLE

## ALUMINIUM DESIGN RADIATOR

Rifle aluminium design radiator has been developed to introduce an innovative architectural approach to your living spaces.

[www.quupheating.com](http://www.quupheating.com)

36





**quup**

COLORS RIFLE COLORS

## POWDER COATED



Pearl White



Matte Black



Anthracite



Granite



Sky Blue

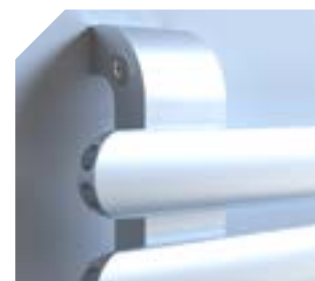


Rose

## ANODIZED



Inox



Space Grey



Titanium Blue



Gold



Piano Black

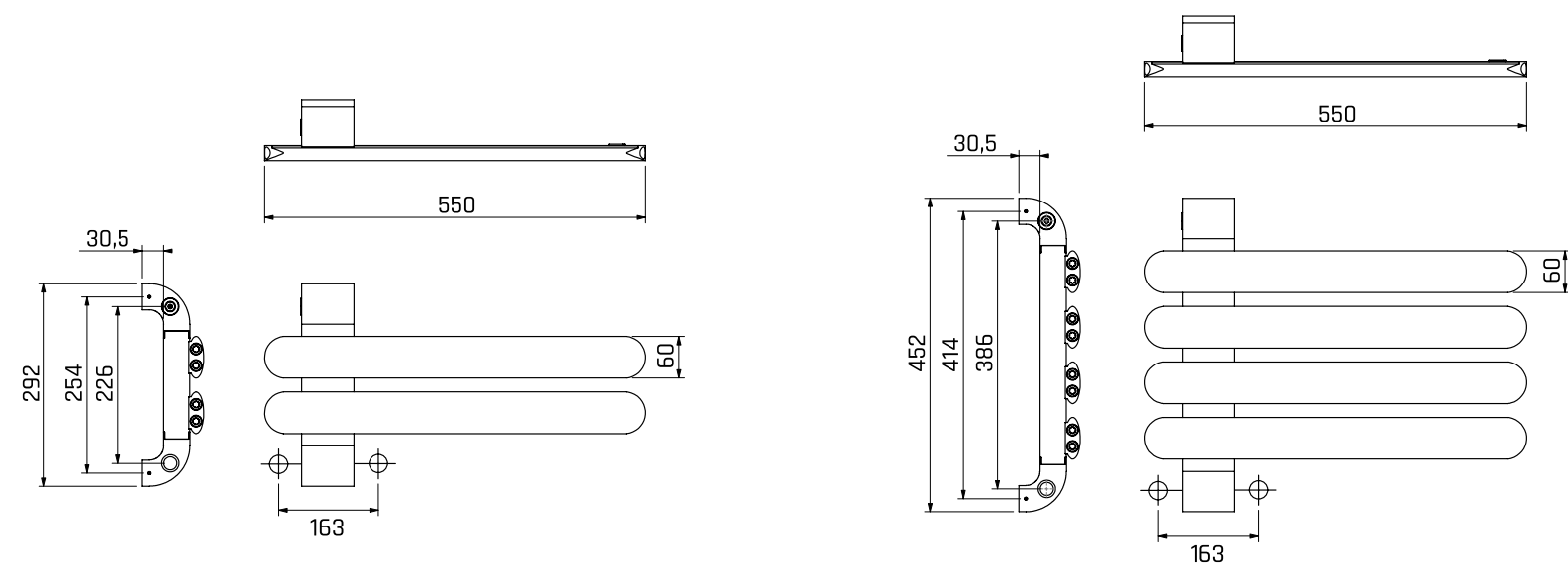


**QUUP**

# TECHNICAL

RIFLE TECHNICAL DATA

PIPE QTY	WIDTH (w)	HEIGHT (h)	HEATING OUTPUT $\Delta T50$ (Hydronic)	WEIGHT
2	550 mm	292 mm	170 W	4.2 kg
4	550 mm	452 mm	340 W	7.3 kg





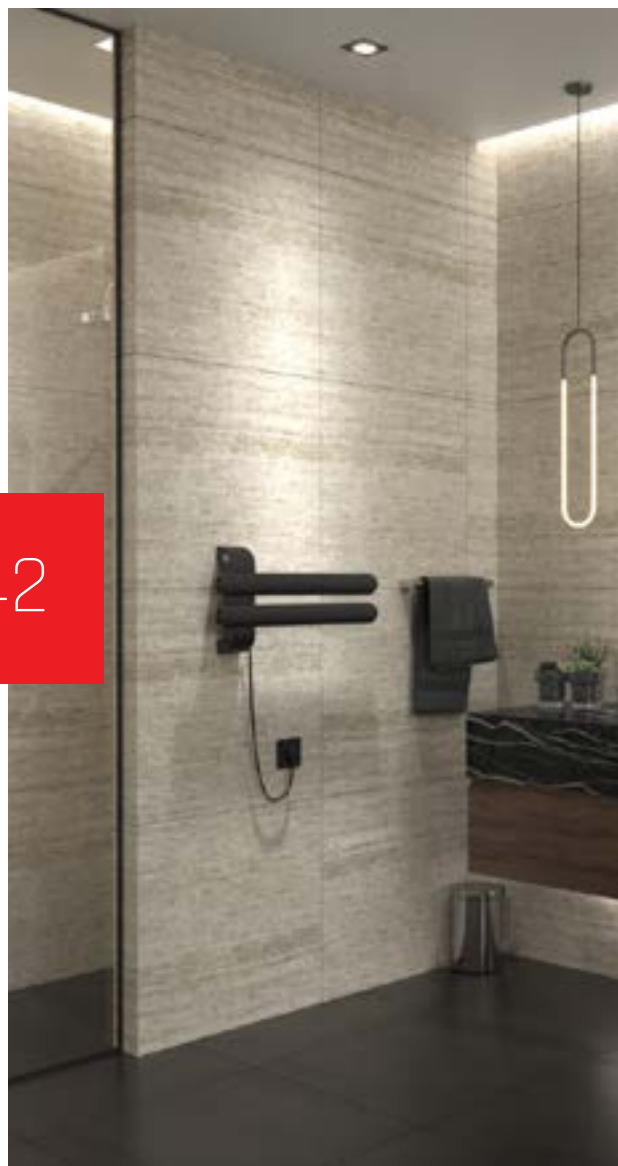
**QUUP**

# RIFLE-

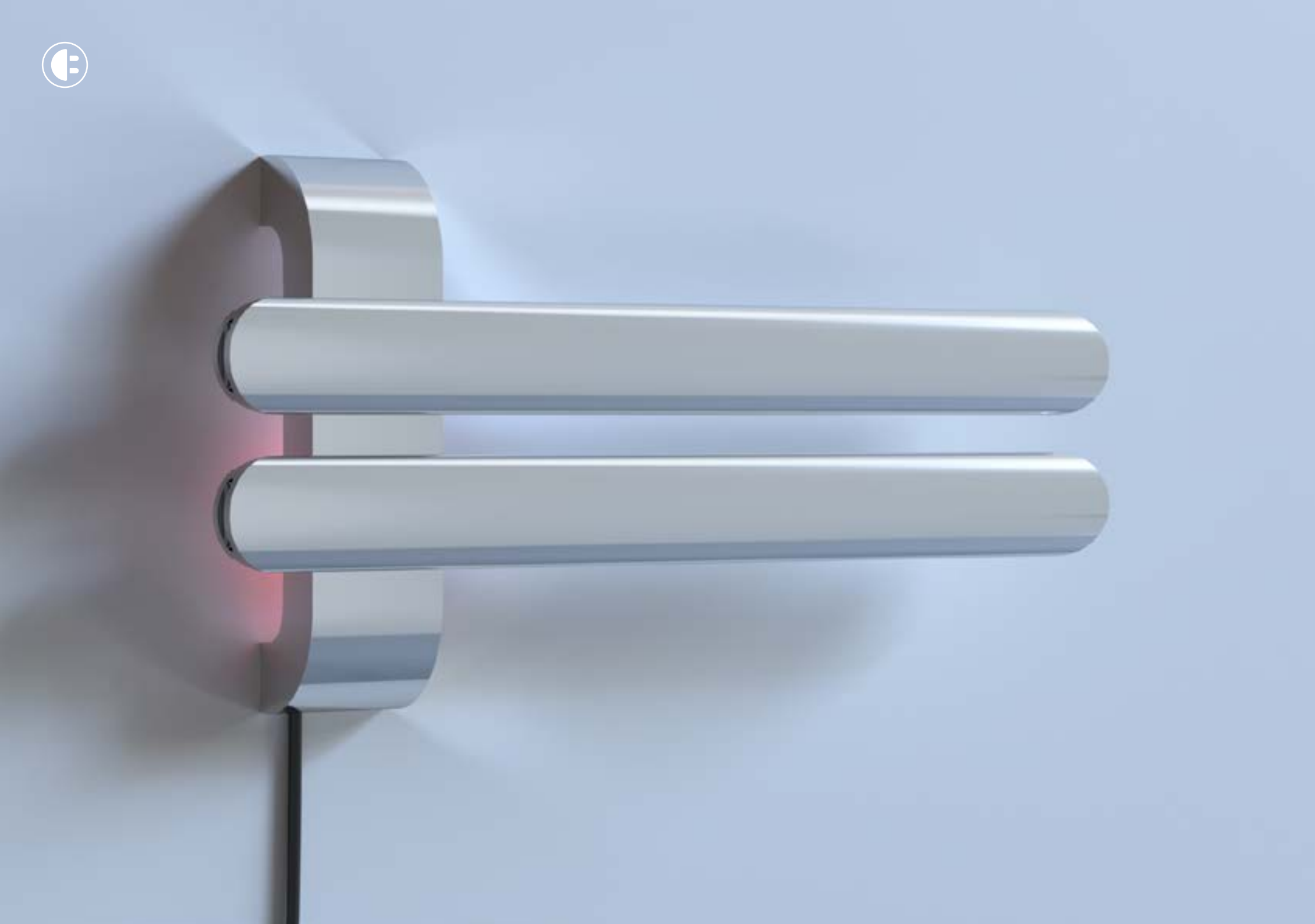
## ALUMINIUM ELECTRICAL HEATER

Rifle aluminium electrical heater has been developed to introduce an innovative architectural approach to your living spaces.

[www.quupheating.com](http://www.quupheating.com)



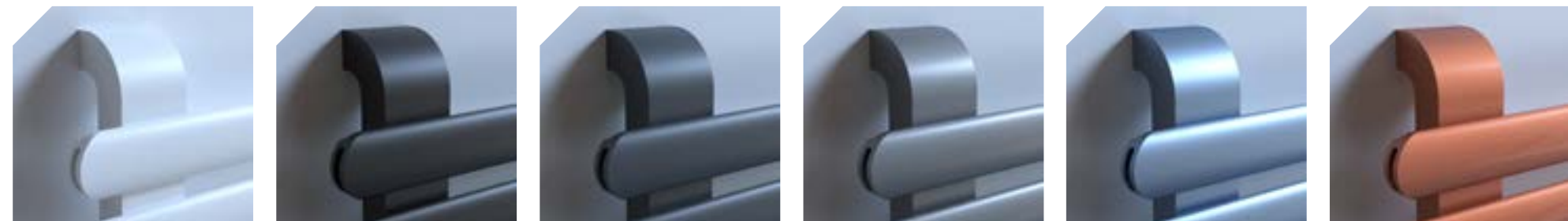
42



**quup**

COLORS RIFLE-E COLORS

## POWDER COATED



| Pearl White | Matte Black | Anthracite | Granite | Sky Blue | Rose

## ANODIZED



| Inox | Space Grey | Titanium Blue | Gold | Piano Black

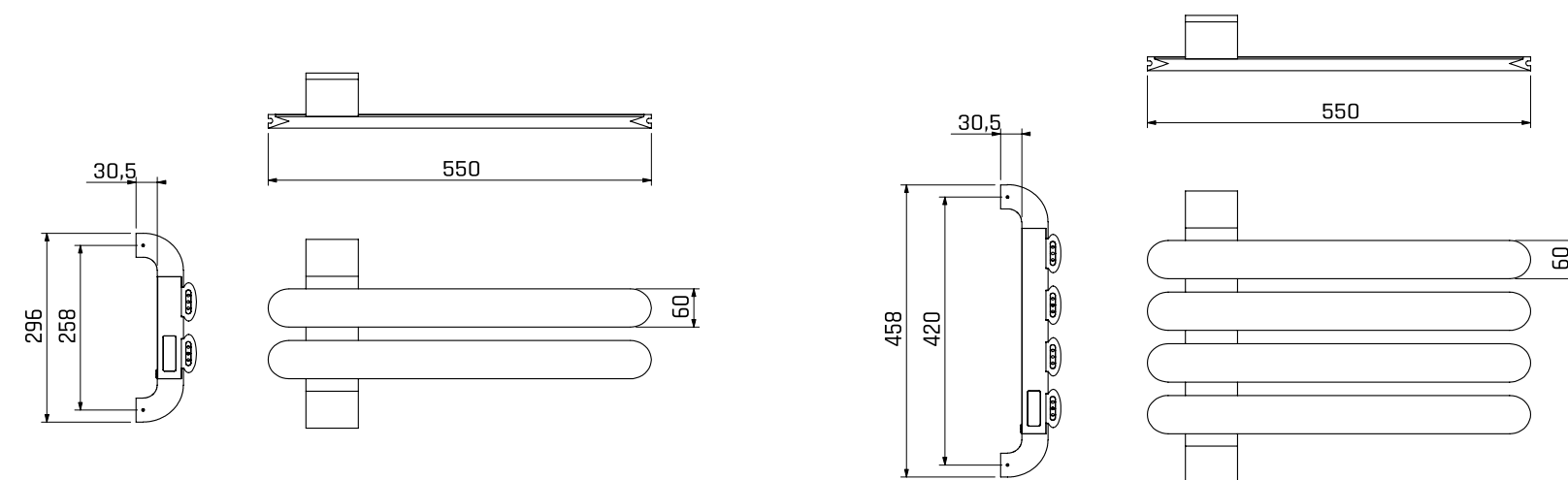


**QUUP**

# TECHNICAL

RIFLE-E TECHNICAL DATA

PIPE QTY	WIDTH (w)	HEIGHT (h)	POWER (Electric Heating Element)	WEIGHT
2	550 mm	296 mm	200 W	3.9 kg
4	550 mm	458 mm	400 W	6.6 kg





**QUUP**

# GUARDIAN

ALUMINIUM DESIGNED  
RADIATOR

Guardian aluminium designed radiator has been developed for those who accept an architectural understanding far from monotony.

[www.quupheating.com](http://www.quupheating.com)



48





**quup**

COLORS  
GUARDIAN COLORS

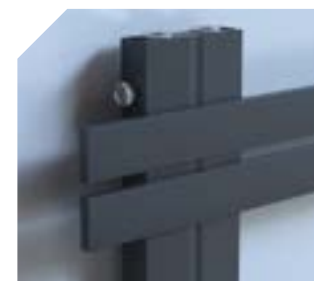
## POWDER COATED



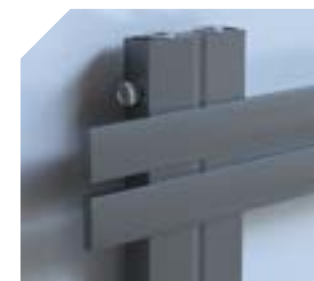
Pearl White



Matte Black



Anthracite



Granite

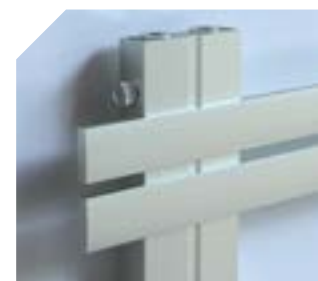


Sky Blue



Rose

## ANODIZED



Inox



Space Grey



Titanium Blue



Gold



Piano Black

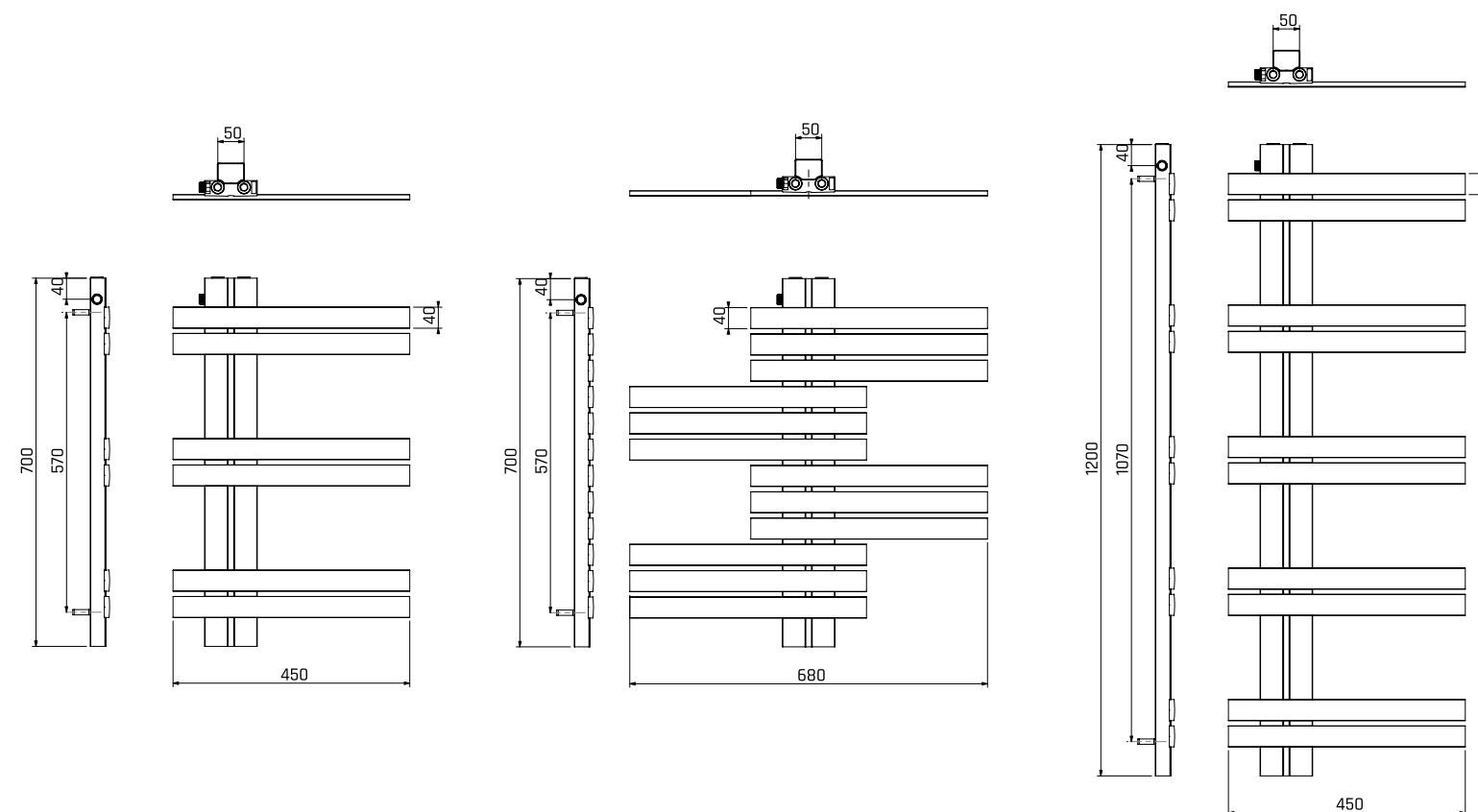


**QUUP**

# TECHNICAL

GUARDIAN TECHNICAL DATA

PIPE QTY	WIDTH (w)	HEIGHT (h)	HEATING OUTPUT $\Delta T50$ (Hydronic)	WEIGHT
6	450 mm	700 mm	250 W	6.0 kg
12	680 mm	700 mm	250 W	8.6 kg
10	450 mm	1200 mm	430 W	10.2 kg



**quup**

# PIXEL

## ALUMINIUM DECORATIVE RADIATOR

Pixel aluminum decorative radiator has been design to provide simplicity and performance at the same time.

[www.quupheating.com](http://www.quupheating.com)





# TECHNICAL

PIXEL TECHNICAL DATA

PIPE QTY (n)	WIDTH (W)	R1	HEIGHT (H)								
			400 mm	500 mm	600 mm	900 mm	1200 mm	1400 mm	1600 mm	1800 mm	2000 mm
3	225 mm	315 mm	-	-	-	-	547 W	638 W	730 W	821 W	912 W
4	300 mm	390 mm	-	-	-	-	730 W	851 W	973 W	1094 W	1216 W
5	375 mm	465 mm	-	-	-	-	912 W	1064 W	1216 W	1368 W	1520 W
6	450 mm	540 mm	418 W	522 W	626 W	940 W	1094 W	1277 W	1459 W	1642 W	1824 W
7	525 mm	615 mm	487 W	609 W	731 W	1096 W	1277 W	1490 W	1702 W	1915 W	2128 W
8	600 mm	690 mm	557 W	696 W	835 W	1253 W	1459 W	1702 W	1946 W	2189 W	2432 W
9	675 mm	765 mm	626 W	783 W	940 W	1409 W	-	-	-	-	-
10	750 mm	840 mm	696 W	870 W	1044 W	1566 W	-	-	-	-	-
11	825 mm	915 mm	766 W	957 W	1148 W	1723 W	-	-	-	-	-
12	900 mm	990 mm	835 W	1044 W	1253 W	1879 W	-	-	-	-	-
13	975 mm	1065 mm	905 W	1131 W	1357 W	2036 W	-	-	-	-	-
14	1050 mm	1140 mm	974 W	1218 W	1462 W	2192 W	-	-	-	-	-
15	1125 mm	1215 mm	1044 W	1305 W	1566 W	2349 W	-	-	-	-	-
16	1200 mm	1290 mm	1114 W	1392 W	1670 W	2506 W	-	-	-	-	-
17	1275 mm	1365 mm	1183 W	1479 W	1775 W	2662 W	-	-	-	-	-
18	1350 mm	1440 mm	1253 W	1566 W	1879 W	2819 W	-	-	-	-	-
19	1425 mm	1515 mm	1322 W	1653 W	1984 W	2975 W	-	-	-	-	-
20	1500 mm	1590 mm	1392 W	1740 W	2088 W	3132 W	-	-	-	-	-

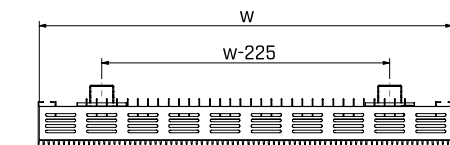
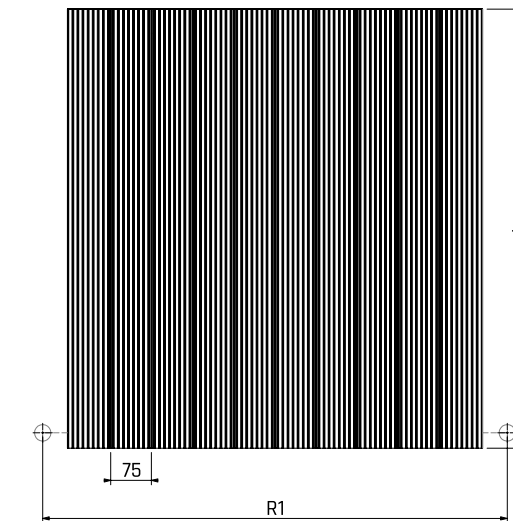
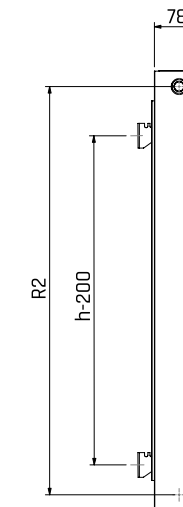
Heat outputs according to  $\Delta T50$ .



# TECHNICAL

PIXEL TECHNICAL DATA

HEIGHT (H)	R2	PIPE WIDTH	PIPE WATER CAPACITY	PIPE WEIGHT
300 mm	242 mm	75 mm	0.05 lt	1.2 kg
400 mm	342 mm	75 mm	0.06 lt	1.4 kg
500 mm	442 mm	75 mm	0.08 lt	1.7 kg
600 mm	542 mm	75 mm	0.09 lt	1.9 kg
900 mm	842 mm	75 mm	0.14 lt	2.7 kg
1200 mm	1142 mm	75 mm	0.18 lt	3.4 kg
1400 mm	1342 mm	75 mm	0.22 lt	3.9 kg
1600 mm	1542 mm	75 mm	0.25 lt	4.4 kg
1800 mm	1742 mm	75 mm	0.28 lt	4.9 kg
2000 mm	1942 mm	75 mm	0.31 lt	5.4 kg





**quup**

PIXEL COLORS  
**COLORS**

POWDER COATED

**POWDER COATED**



Pearl White



Matte Black



Anthracite



Granite



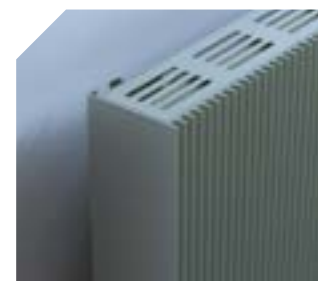
Sky Blue



Rose

ANODIZED

**ANODIZED**



Inox



quup

# LUCID

## ALUMINIUM DECORATIVE RADIATOR

---

Lucid aluminium decorative radiator has been design to provide simplicity and performance at the same time.

[www.quupheating.com](http://www.quupheating.com)





# TECHNICAL

LUCID TECHNICAL DATA

PIPE QTY (n)	WIDTH (W)	R1	HEIGHT (H)								
			400 mm	500 mm	600 mm	900 mm	1200 mm	1400 mm	1600 mm	1800 mm	2200 mm
3	225 mm	315 mm	-	-	-	-	414 W	483 W	552 W	621 W	690 W
4	300 mm	390 mm	-	-	-	-	552 W	644 W	736 W	828 W	920 W
5	375 mm	465 mm	-	-	-	-	690 W	805 W	920 W	1035 W	1150 W
6	450 mm	540 mm	329 W	411 W	493 W	740 W	828 W	966 W	1104 W	1242 W	1380 W
7	525 mm	615 mm	384 W	480 W	575 W	863 W	966 W	1127 W	1288 W	1449 W	1610 W
8	600 mm	690 mm	438 W	548 W	658 W	986 W	1104 W	1288 W	1472 W	1656 W	1840 W
9	675 mm	765 mm	493 W	617 W	740 W	1110 W	-	-	-	-	-
10	750 mm	840 mm	548 W	685 W	822 W	1233 W	-	-	-	-	-
11	825 mm	915 mm	603 W	754 W	904 W	1356 W	-	-	-	-	-
12	900 mm	990 mm	658 W	822 W	986 W	1480 W	-	-	-	-	-
13	975 mm	1065 mm	712 W	891 W	1069 W	1603 W	-	-	-	-	-
14	1050 mm	1140 mm	767 W	959 W	1151 W	1726 W	-	-	-	-	-
15	1125 mm	1215 mm	822 W	1028 W	1233 W	1850 W	-	-	-	-	-
16	1200 mm	1290 mm	877 W	1096 W	1315 W	1973 W	-	-	-	-	-
17	1275 mm	1365 mm	932 W	1165 W	1397 W	2096 W	-	-	-	-	-
18	1350 mm	1440 mm	986 W	1233 W	1480 W	2219 W	-	-	-	-	-
19	1425 mm	1515 mm	1041 W	1302 W	1562 W	2343 W	-	-	-	-	-
20	1500 mm	1590 mm	1096 W	1370 W	1644 W	2466 W	-	-	-	-	-

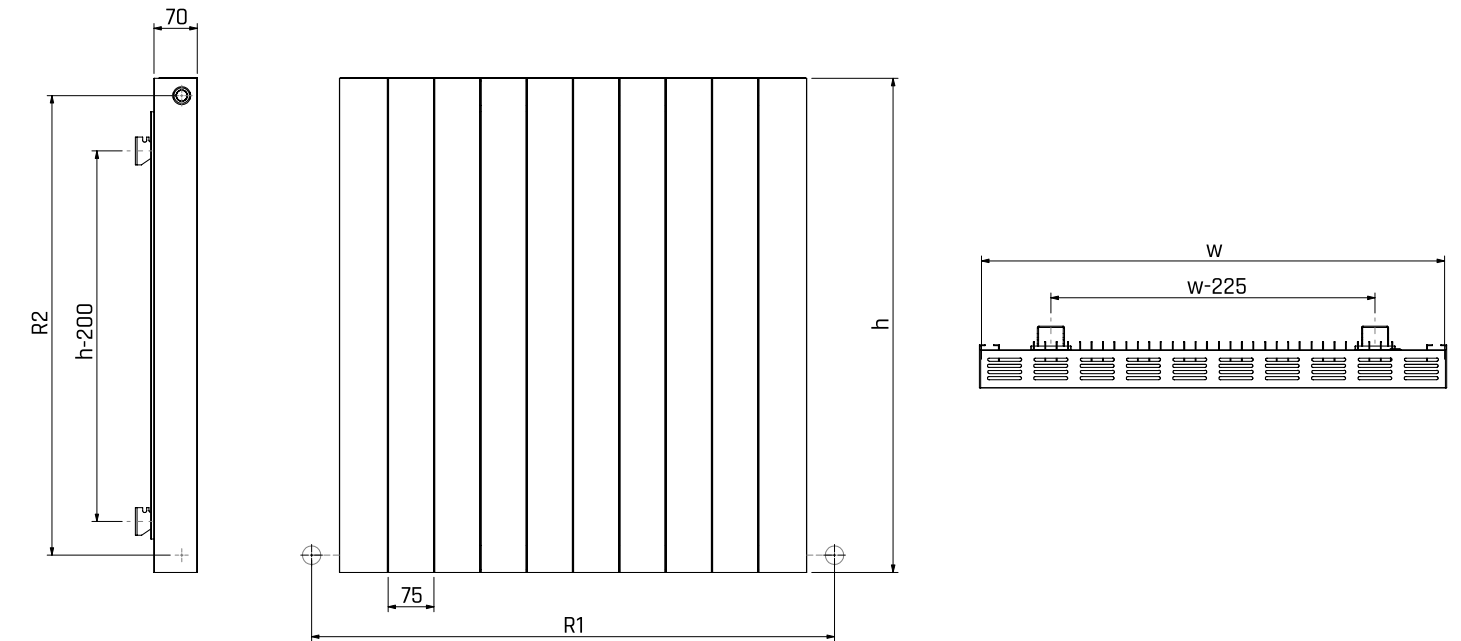
Heat outputs according to  $\Delta T50$ .



# TECHNICAL

LUCID TECHNICAL DATA

HEIGHT (H)	R2	PIPE WIDTH	PIPE WATER CAPACITY	PIPE WEIGHT
300 mm	242 mm	75 mm	0.05 lt	1.1 kg
400 mm	342 mm	75 mm	0.06 lt	1.3 kg
500 mm	442 mm	75 mm	0.08 lt	1.5 kg
600 mm	542 mm	75 mm	0.09 lt	1.7 kg
900 mm	842 mm	75 mm	0.14 lt	2.3 kg
1200 mm	1142 mm	75 mm	0.18 lt	2.9 kg
1400 mm	1342 mm	75 mm	0.22 lt	3.6 kg
1600 mm	1542 mm	75 mm	0.25 lt	3.7 kg
1800 mm	1742 mm	75 mm	0.28 lt	4.2 kg
2000 mm	1942 mm	75 mm	0.31 lt	4.6 kg







**quup**

COLORS LUCID COLORS

# POWDER COATED



Pearl White



Matte Black



Anthracite



Granite



Sky Blue



Rose

**QUUP**

# ODZY

## ALUMINIUM TUBE RADIATOR

Odzy aluminium tube radiator has been designed for those who love elegant details in their living spaces.

[www.quupheating.com](http://www.quupheating.com)

66





# TECHNICAL

ODZY TECHNICAL DATA

PIPE QTY (n)	WIDTH (W)	R1	HEIGHT (H)								
			400 mm	500 mm	600 mm	900 mm	1200 mm	1400 mm	1600 mm	1800 mm	2000 mm
3	195 mm	285 mm	-	-	-	-	407 W	475 W	542 W	610 W	678 W
4	255 mm	345 mm	-	-	-	-	542 W	633 W	723 W	814 W	904 W
5	315 mm	405 mm	-	-	-	-	678 W	791 W	904 W	1017 W	1130 W
6	375 mm	465 mm	310 W	387 W	464 W	697 W	814 W	949 W	1085 W	1220 W	1356 W
7	435 mm	525 mm	361 W	452 W	542 W	813 W	949 W	1107 W	1266 W	1424 W	1582 W
8	495 mm	585 mm	413 W	516 W	619 W	929 W	1085 W	1266 W	1446 W	1627 W	1808 W
9	555 mm	645 mm	464 W	581 W	697 W	1045 W	-	-	-	-	-
10	615 mm	705 mm	516 W	645 W	774 W	1161 W	-	-	-	-	-
11	675 mm	765 mm	568 W	710 W	851 W	1277 W	-	-	-	-	-
12	735 mm	825 mm	619 W	774 W	929 W	1393 W	-	-	-	-	-
13	795 mm	885 mm	671 W	839 W	1006 W	1509 W	-	-	-	-	-
14	855 mm	945 mm	722 W	903 W	1084 W	1625 W	-	-	-	-	-
15	915 mm	1005 mm	774 W	968 W	1161 W	1742 W	-	-	-	-	-
16	975 mm	1065 mm	826 W	1032 W	1238 W	1858 W	-	-	-	-	-
17	1035 mm	1125 mm	877 W	1097 W	1316 W	1974 W	-	-	-	-	-
18	1095 mm	1185 mm	929 W	1161 W	1393 W	2090 W	-	-	-	-	-
19	1155 mm	1245 mm	980 W	1226 W	1471 W	2206 W	-	-	-	-	-
20	1215 mm	1305 mm	1032 W	1290 W	1548 W	2322 W	-	-	-	-	-

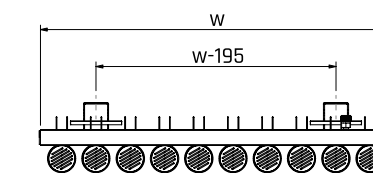
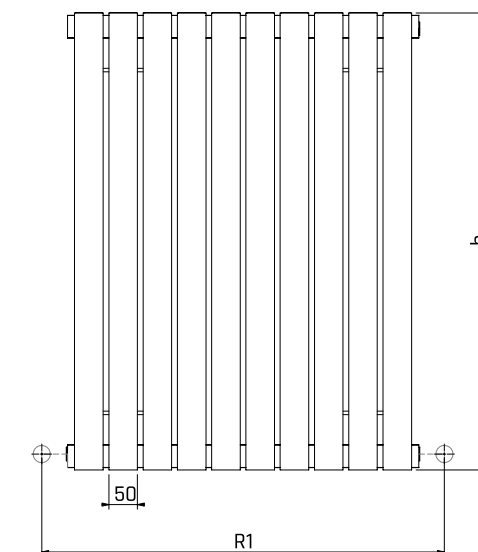
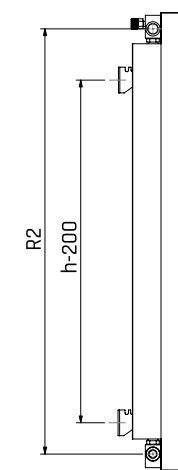
Heat outputs according to  $\Delta T50$ .



# TECHNICAL

ODZY TECHNICAL DATA

HEIGHT (H)	R2	PIPE WIDTH	PIPE WATER CAPACITY	PIPE WEIGHT
300 mm	242 mm	50 mm	0.05 lt	0.8 kg
400 mm	342 mm	50 mm	0.06 lt	1.0 kg
500 mm	442 mm	50 mm	0.08 lt	1.2 kg
600 mm	542 mm	50 mm	0.09 lt	1.3 kg
900 mm	842 mm	50 mm	0.14 lt	1.8 kg
1200 mm	1142 mm	50 mm	0.18 lt	2.3 kg
1400 mm	1342 mm	50 mm	0.22 lt	2.6 kg
1600 mm	1542 mm	50 mm	0.25 lt	2.9 kg
1800 mm	1742 mm	50 mm	0.28 lt	3.3 kg
2000 mm	1942 mm	50 mm	0.31 lt	3.6 kg





**quup**

COLORS ODZY COLORS

## POWDER COATED



Pearl White



Matte Black



Anthracite



Granite



Sky Blue



Rose

## ANODIZED



Inox



Space Grey



Titanium Blue



Gold



Piano Black



quup

# FRAME

## UNIVERSAL ALUMINIUM RADIATOR

---

Frame universal aluminium radiator has been designed to fit two different models in a single product and to offer two different styles with the same dimensions.

[www.quupheating.com](http://www.quupheating.com)





# TECHNICAL

FRAME TECHNICAL DATA

PIPE QTY (n)	WIDTH (W)	R1	HEIGHT (H)								
			400 mm	500 mm	600 mm	900 mm	1200 mm	1400 mm	1600 mm	1800 mm	2000 mm
3	225 mm	315 mm	-	-	-	-	360 W	420 W	480 W	540 W	600 W
4	300 mm	390 mm	-	-	-	-	480 W	560 W	640 W	720 W	800 W
5	375 mm	465 mm	-	-	-	-	600 W	700 W	800 W	900 W	1000 W
6	450 mm	540 mm	276 W	345 W	414 W	621 W	720 W	840 W	960 W	1080 W	1200 W
7	525 mm	615 mm	322 W	403 W	483 W	725 W	840 W	980 W	1120 W	1260 W	1400 W
8	600 mm	690 mm	368 W	460 W	552 W	828 W	960 W	1120 W	1280 W	1440 W	1600 W
9	675 mm	765 mm	414 W	518 W	621 W	932 W	-	-	-	-	-
10	750 mm	840 mm	460 W	575 W	690 W	1035 W	-	-	-	-	-
11	825 mm	915 mm	506 W	633 W	759 W	1139 W	-	-	-	-	-
12	900 mm	990 mm	552 W	690 W	828 W	1242 W	-	-	-	-	-
13	975 mm	1065 mm	598 W	748 W	897 W	1346 W	-	-	-	-	-
14	1050 mm	1140 mm	644 W	805 W	966 W	1449 W	-	-	-	-	-
15	1125 mm	1215 mm	690 W	863 W	1035 W	1553 W	-	-	-	-	-
16	1200 mm	1290 mm	736 W	920 W	1104 W	1656 W	-	-	-	-	-
17	1275 mm	1365 mm	782 W	978 W	1173 W	1760 W	-	-	-	-	-
18	1350 mm	1440 mm	828 W	1035 W	1242 W	1863 W	-	-	-	-	-
19	1425 mm	1515 mm	874 W	1093 W	1311 W	1967 W	-	-	-	-	-
20	1500 mm	1590 mm	920 W	1150 W	1380 W	2070 W	-	-	-	-	-

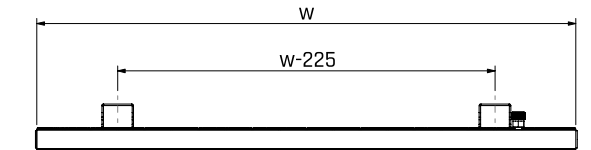
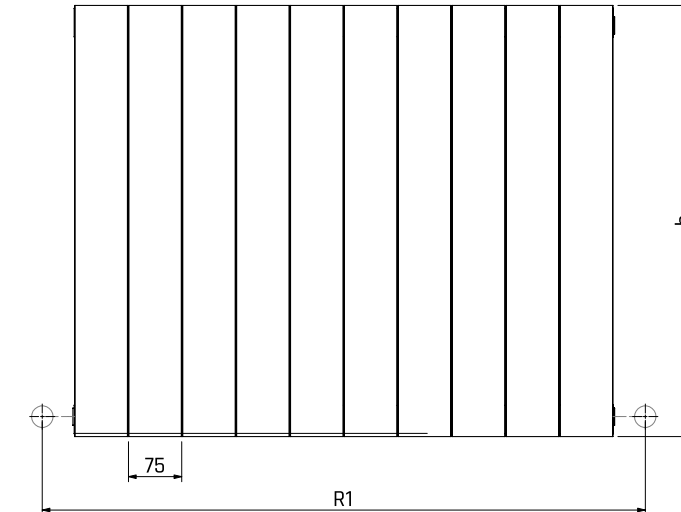
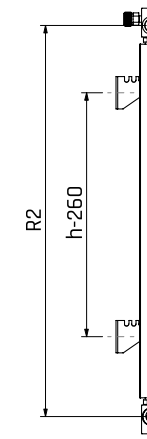
Heat outputs according to  $\Delta T50$ .



# TECHNICAL

FRAME TECHNICAL DATA

HEIGHT (H)	R2	PIPE WIDTH	PIPE WATER CAPACITY	PIPE WEIGHT
300 mm	242 mm	75 mm	0.05 lt	0.8 kg
400 mm	342 mm	75 mm	0.06 lt	0.9 kg
500 mm	442 mm	75 mm	0.08 lt	1.1 kg
600 mm	542 mm	75 mm	0.09 lt	1.2 kg
900 mm	842 mm	75 mm	0.14 lt	1.6 kg
1200 mm	1142 mm	75 mm	0.18 lt	2.0 kg
1400 mm	1342 mm	75 mm	0.22 lt	2.5 kg
1600 mm	1542 mm	75 mm	0.25 lt	2.6 kg
1800 mm	1742 mm	75 mm	0.28 lt	2.8 kg
2000 mm	1942 mm	75 mm	0.31 lt	3.1 kg





**quup**

COLORS  
FRAME COLORS

POWDER COATED



Pearl White



Matte Black



Anthracite



Granite



Sky Blue



Rose

**QUUP**

# SKY

## ALUMINIUM SLIM RADIATOR

Sky aluminium slim radiator has been designed to offer the best balance of price and performance.

[www.quupheating.com](http://www.quupheating.com)



78







# TECHNICAL

SKY TECHNICAL DATA

PIPE QTY (n)	WIDTH (W)	R1	HEIGHT (H)								
			400 mm	500 mm	600 mm	900 mm	1200 mm	1400 mm	1600 mm	1800 mm	2000 mm
3	225 mm	315 mm	-	-	-	-	184 W	214 W	245 W	275 W	306 W
4	300 mm	390 mm	-	-	-	-	245 W	286 W	326 W	367 W	408 W
5	375 mm	465 mm	-	-	-	-	306 W	357 W	408 W	459 W	510 W
6	450 mm	540 mm	139 W	174 W	209 W	313 W	367 W	428 W	490 W	551 W	612 W
7	525 mm	615 mm	162 W	203 W	244 W	365 W	428 W	500 W	571 W	643 W	714 W
8	600 mm	690 mm	186 W	232 W	278 W	418 W	490 W	571 W	653 W	734 W	816 W
9	675 mm	765 mm	209 W	261 W	313 W	470 W	-	-	-	-	-
10	750 mm	840 mm	232 W	290 W	348 W	522 W	-	-	-	-	-
11	825 mm	915 mm	255 W	319 W	383 W	574 W	-	-	-	-	-
12	900 mm	990 mm	278 W	348 W	418 W	626 W	-	-	-	-	-
13	975 mm	1065 mm	302 W	377 W	452 W	679 W	-	-	-	-	-
14	1050 mm	1140 mm	325 W	406 W	487 W	731 W	-	-	-	-	-
15	1125 mm	1215 mm	348 W	435 W	522 W	783 W	-	-	-	-	-
16	1200 mm	1290 mm	371 W	464 W	557 W	835 W	-	-	-	-	-
17	1275 mm	1365 mm	394 W	493 W	592 W	887 W	-	-	-	-	-
18	1350 mm	1440 mm	418 W	522 W	626 W	940 W	-	-	-	-	-
19	1425 mm	1515 mm	441 W	551 W	661 W	992 W	-	-	-	-	-
20	1500 mm	1590 mm	464 W	580 W	696 W	1044 W	-	-	-	-	-

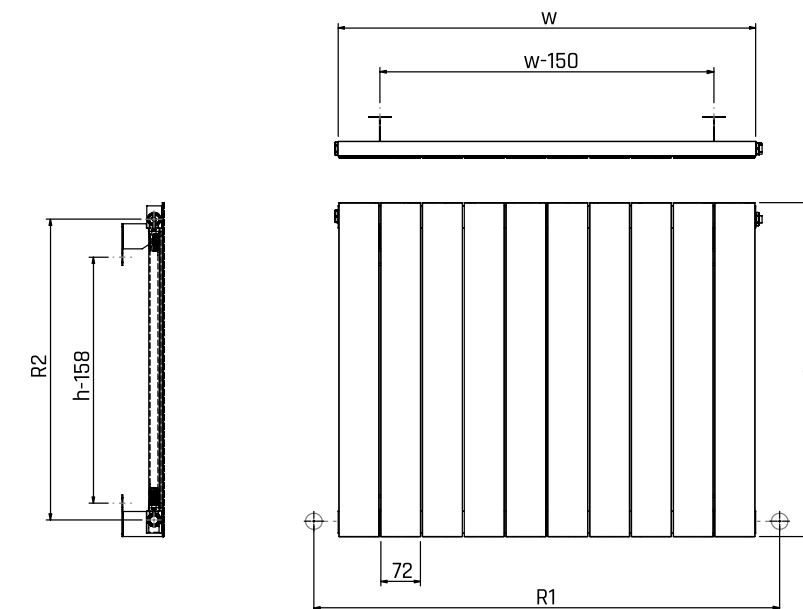
Heat outputs according to  $\Delta T50$ .



# TECHNICAL

SKY TECHNICAL DATA

HEIGHT (H)	R2	PIPE WIDTH	PIPE WATER CAPACITY	PIPE WEIGHT
300 mm	242 mm	75 mm	0.05 lt	0.3 kg
400 mm	342 mm	75 mm	0.06 lt	0.4 kg
500 mm	442 mm	75 mm	0.08 lt	0.5 kg
600 mm	542 mm	75 mm	0.09 lt	0.8 kg
900 mm	842 mm	75 mm	0.14 lt	0.9 kg
1200 mm	1142 mm	75 mm	0.18 lt	1.2 kg
1400 mm	1342 mm	75 mm	0.22 lt	1.4 kg
1600 mm	1542 mm	75 mm	0.25 lt	1.6 kg
1800 mm	1742 mm	75 mm	0.28 lt	1.8 kg
2000 mm	1942 mm	75 mm	0.31 lt	2.0 kg



**quup**

COLORS SKY COLORS

# POWDER COATED



Pearl White



Matte Black



Anthracite



Granite



Sky Blue



Rose

**quup**

# VECTOR

## ALUMINIUM DECORATIVE TOWEL WARMER

Vector aluminium decorative towel warmer has been designed to provide traditional tower warmer usage advantages while ensuring balance in performance and design.

[www.quupheating.com](http://www.quupheating.com)





**quup**

VECTOR COLORS  
**COLORS**

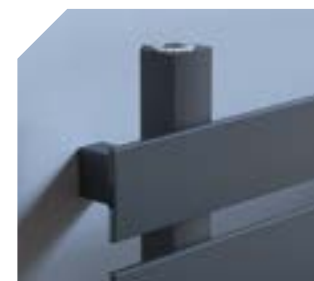
## POWDER COATED



Pearl White



Matte Black



Anthracite



Granite



Sky Blue



Rose

## ANODIZED



Inox



Space Grey

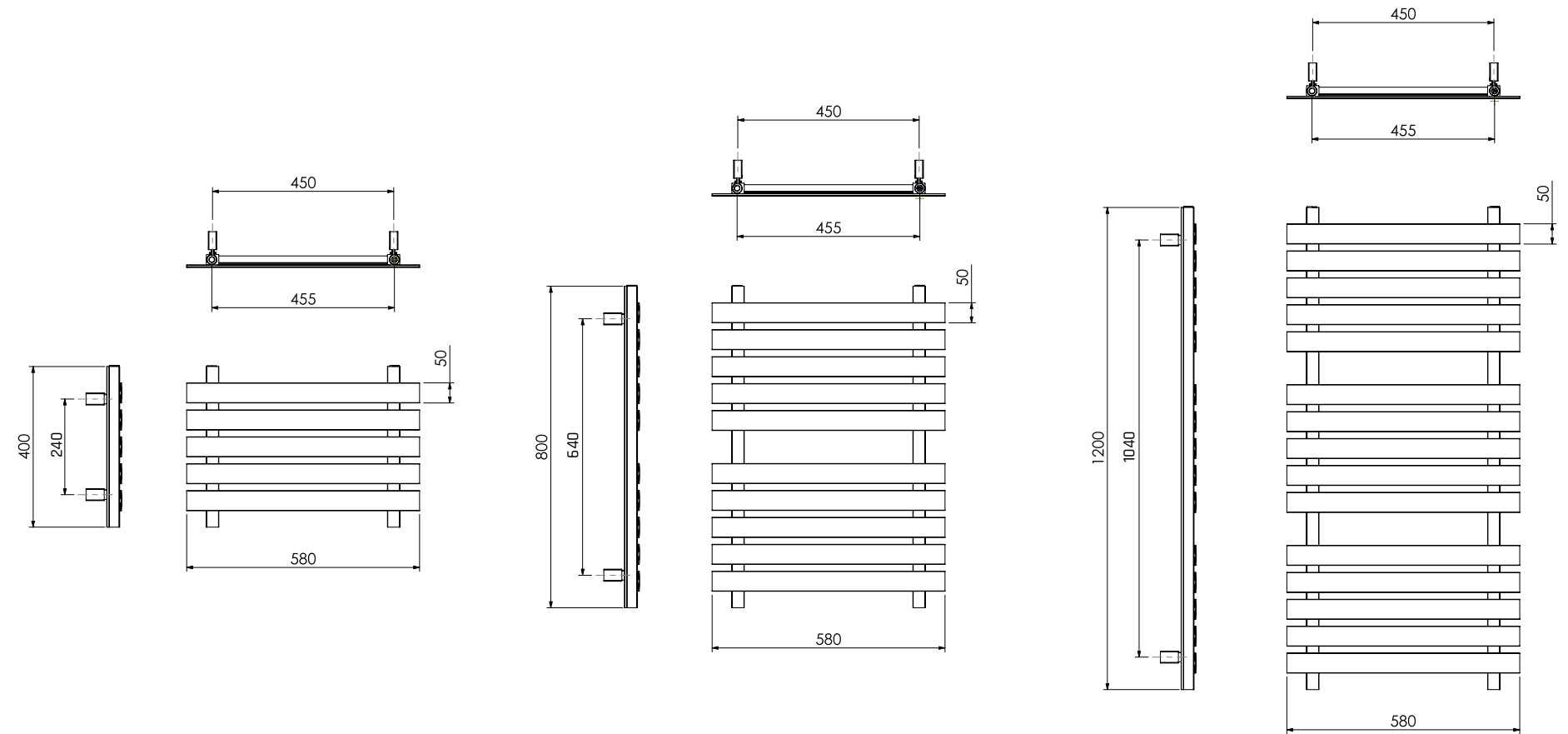


**QUUP**

# TECHNICAL

VECTOR TECHNICAL DATA

PIPE QTY	WIDTH (w)	HEIGHT (h)	HEATING OUTPUT $\Delta T50$ (Hydronic)	POWER (Electric Heating Element)	WEIGHT
5	580 mm	400 mm	242 W	200 W	3.8 kg
10	580 mm	800 mm	442 W	400 W	7.4 kg
15	580 mm	1200 mm	650 W	600 W	11.0 kg



**QUUP**

# SPARK

## ALUMINIUM DECORATIVE TOWEL WARMER

Spark aluminium decorative towel warmer has been developed to add value to your bathrooms while making your life easier.

[www.quupheating.com](http://www.quupheating.com)



90





**quup**

COLORS SPARK COLORS

## POWDER COATED



Pearl White



Matte Black



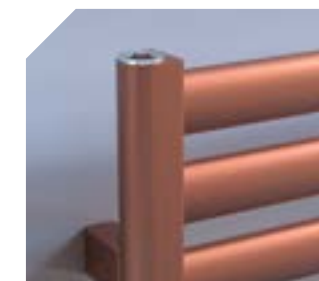
Anthracite



Granite



Sky Blue



Rose

## ANODIZED



Inox



Silver

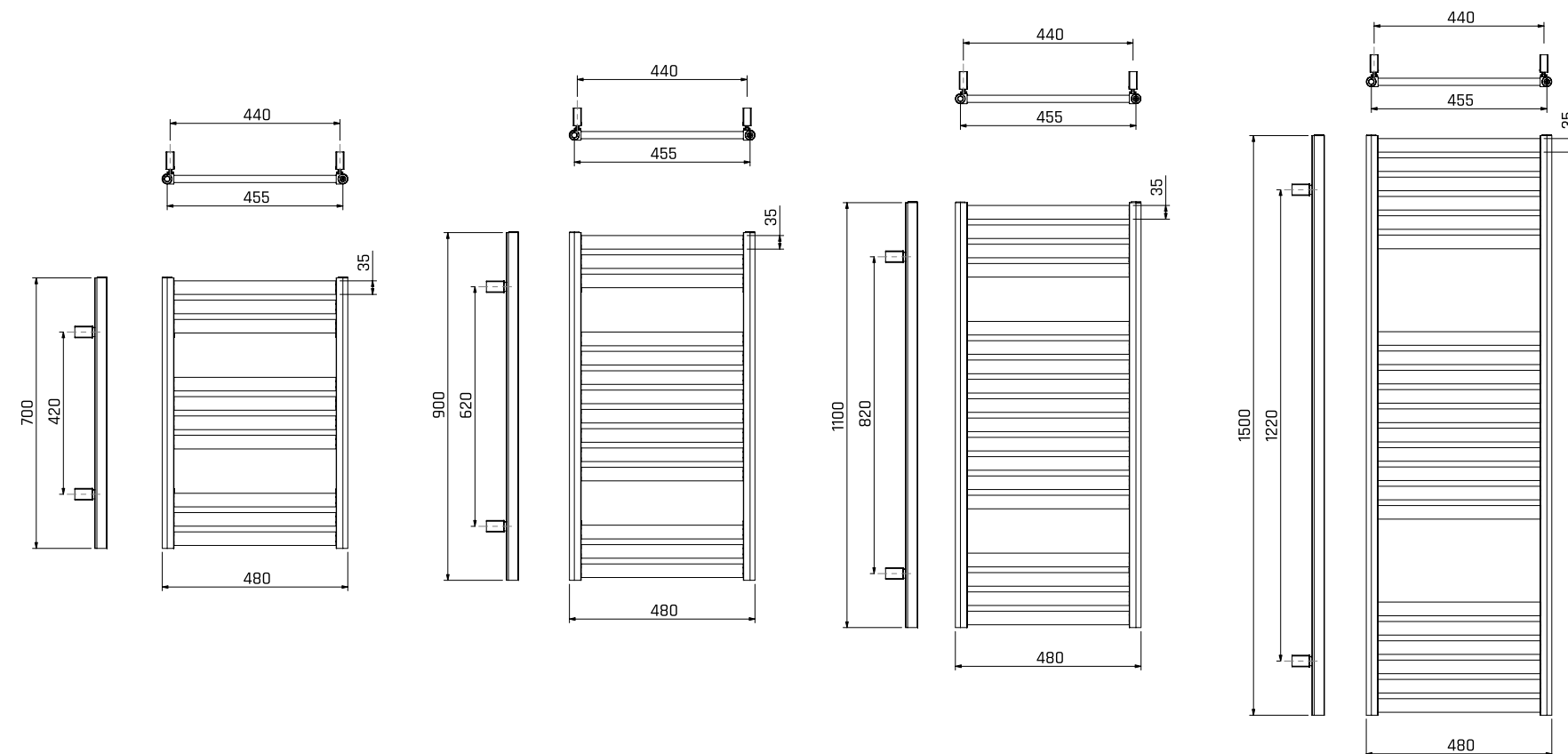


**QUUP**

# TECHNICAL

SPARK TECHNICAL DATA

PIPE QTY	WIDTH (w)	HEIGHT (h)	HEATING OUTPUT ΔT50 (Hydronic)	POWER (Electric Heating Element)	WEIGHT
10	480 mm	700 mm	293 W	200 W	4.5 kg
14	480 mm	900 mm	368 W	400 W	6.0 kg
18	480 mm	1100 mm	476 W	400 W	7.5 kg
22	480 mm	1500 mm	582 W	600 W	9.6 kg





# quup

HEATING SYSTEMS

EN <sup>EURONORM</sup> 442

BSRIA

CE

TSE

5 YIL  
GARANTİ  
5 YIL GARANTİ

Atatürk Mah. Orhan Veli Cad. No: 7-9 34522 Kiraç / Esenyurt / İstanbul / TURKEY

+90 212 886 55 77

[www.quupheating.com](http://www.quupheating.com) / [info@quupheating.com](mailto:info@quupheating.com)